

# Testfiltration Plants for Rental

**ACT NOW -**  
take your chance  
to test quality  
technology

## TESTFILTRATION PLANTS FOR RENTAL

Do you have a challenging filtration task? Are you looking for a highly efficient filtration process? Then take the opportunity and test Dynamic Crossflow Filtration.

This technique uses rotating ceramic membrane discs, resulting in extreme crossflow velocities with very low energy consumption at the same time. This combines the best material with the most efficient process.

**There is a wide range of applications:**

in the treatment of waste and process water, in the processing of digester effluents and microorganisms, in the food and beverage industry as well as in the chemical and pharmaceutical industry and many more.

To help you to convince yourself of the advantages of Dynamic Crossflow Filtration, KERAFOL® offers two types of test plants for rental. This allows you to carry out initial tests and gain first experience with the technology.

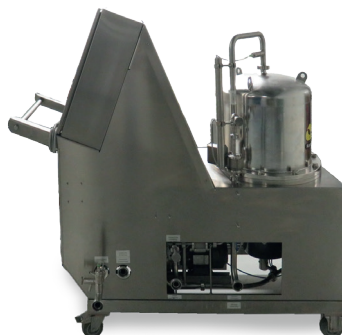
### ADVANTAGES OF THE SMALL PLANT (0.1 m<sup>2</sup>)

- Ideal for first laboratory scale tests
- Simple manual operation
- Only small amounts of feed material needed
- Fast change of discs (testing of different pore sizes)



### ADVANTAGES OF THE BIG PLANT (2 m<sup>2</sup>)

- Ideal for simulation of a production scale
- Easy operation via touchpad
- Automatic or manual operation
- Various setting options
- Automatic emptying at desired concentration level
- Equipping with fewer discs possible



#### Are you interested?

Then do not hesitate and contact the membrane experts from KERAFOL®. We will be happy to advise you on all possible applications.

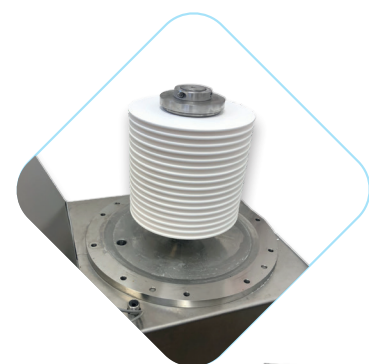
KERAFOL® offers two types of test plants for rental. This allows you to carry out initial tests yourself and convince yourself of the advantages of Dynamic Crossflow Filtration.

## TECHNICAL DATA COMPARISON

	Small plant (0.1 m <sup>2</sup> )	Big plant (2 m <sup>2</sup> )		
<b>General Data</b>				
Length	750 mm	1535 mm		
With	404 mm	600 mm		
Height	560 mm	1535 mm		
Weight	Approx. 75 kg (incl. discs)	Approx. 380 kg (incl. discs)		
Connections	Feed	13 mm	Feed	DN25
	Concentrate	13 mm	Concentrate	DN25
	Filtrate	6 mm	Filtrate	DN25
	Overflow	13 mm	Overflow	DN25
Dead volume	Approx. 1.5 L	Approx. 60 L		
<b>Filtration area</b>				
Size of the discs	Ø 152 mm	Ø 312 mm		
Number of discs	3	Up to 16		
Membrane area	0.1 m <sup>2</sup>	Up to 2.1 m <sup>2</sup>		
<b>Electricity</b>				
Voltage	230 V	400 V		
Frequency	50 Hz	50 Hz		
Connected Load	0.75 kW	5.5 kW		
<b>Pneumatic</b>				
Connecting pressure	6 bar, dry, clean	6 bar, dry, clean		



**SMALL PLANT**  
(0.1 m<sup>2</sup>)



**BIG PLANT**  
(2 m<sup>2</sup>)

